

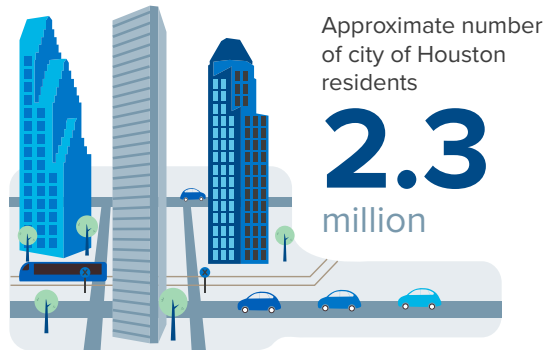
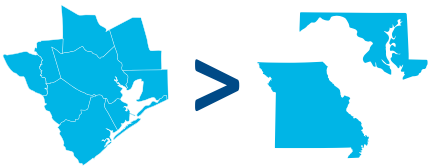
POPULATION AND DEMOGRAPHICS

6.8 million

residents in the 9-county Houston-The Woodlands-Sugar Land MSA

Nation's 5th most populous metro area

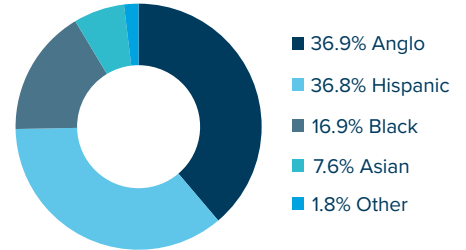
Larger than Missouri or Maryland



Houston is the nation's 4th most populous city

Race/Ethnicity: Houston MSA

Houston today mirrors the U.S. in 5 decades



Nearly 1 in 4 Houstonians are foreign born

GLOBAL PRESENCE

15 foreign governments

maintain trade and commercial offices in Houston

35 active foreign chambers of commerce

17.3% of the region's economy is tied to exports

exports support **330,000** jobs

54.1 million

Houston airport passengers in '17

global travelers **11.2** million domestic travelers **42.9** million

182 nonstop destinations

\$192.2 billion

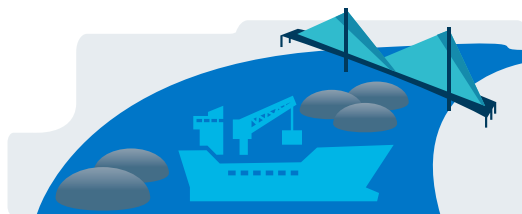
in trade was handled by the Houston-Galveston Customs Districts in '17

\$83.0 billion

in imports (in '17)

\$109.2 billion

in exports (in '17)



Houston has the largest export market in the U.S.

Port Houston ranks

1st

in import tonnage for 26 straight years

Largest

Gulf Coast container port

2nd

in total tonnage for 24 straight years

5,000+

Houston companies doing business abroad

1,000

Houston firms report foreign ownership

90+ nations

have consular representation in Houston

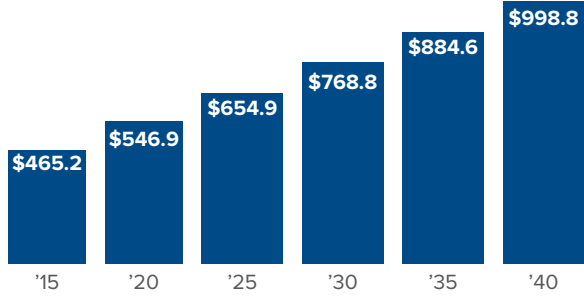
3rd largest representation in the nation

20 foreign banks

are located in Houston from 10 nations

ECONOMY

If Houston were an independent nation, the region would have the 24th largest economy in the world, behind Sweden and ahead of Poland.



Houston - The Woodlands - Sugarland MSA
GDP forecast (\$ billions '09 constant dollars)
Source: Perryman Group

3.1 percent
expected real GDP
annual growth from '15 - '40

GDP expected to more than
double between '15 and '40



21 Fortune 500 Companies call Houston home

EMPLOYMENT



more jobs
than 35
states

Service industries
account for

4 out of **5**

workers in the region

The goods-producing
sector accounts for nearly

1 in **5**

of the region's jobs



Industry Share of Houston MSA Employment

- 21.0%** Trade, Transportation, and Utilities
- 15.2%** Professional and Business Services
- 12.9%** Educational and Health Services
- 13.2%** Government
- 10.6%** Leisure and Hospitality
- 7.7%** Manufacturing
- 7.0%** Construction
- 3.4%** Other Services
- 3.2%** Finance and Insurance
- 2.9%** Mining and Logging (Upstream Energy)
- 1.8%** Real Estate and Rental and Leasing
- 1.0%** Information

Source: Texas Workforce Commission

INDUSTRIES

The Texas Medical Center is
the world's largest medical complex.



\$3 billion
in construction
projects underway

50 million
developed square feet

Houston is home to 87,500 engineers and
architects, more than any other U.S. metro area.



Approximately **230,000**
people work in the region's manufacturing industry

40
of the 134 publicly-traded oil
and gas exploration firms
are housed in Houston

700 | **800**
exploration and
production firms |
oil field service
companies
located in the Houston region

10 million
annual patient visits

180,000+
annual surgeries



Houston employs **30%** of the
nation's oil and gas extraction jobs